



CEMHER[®]

- ORIGIN -

MICROCEMENT

STATE OF THE ART COATINGS

MONJU SURFACES



#INDEX

13
MICRODUO

21
MICRODUR

29
MICROLEVEL

37
MICROPOOL

43
TONERS

47
BONDING BRIDGES

51
EPOXY

55
PRIMERS

59
POLYURETHANE

65
SPECIALITIES

ORIGIN

“Architecture is not four walls and a roof,
it is the space and the spirit generated within”

Lao Tsé.

What does a place need if it is to have spirit?

When a space begins to be created it is dead, empty and lifeless. It needs something if it is to become a space with soul, a space that stands out from the rest; a space that makes one feel.

A decorative coating, such as microcement, has the same meaning for a space as the foundations do for a building: the beginning! The beginning of a space that expresses, welcomes, excites, that has life.

Cemher is exactly this, it is THE ORIGIN.

It is the origin of idyllic places, which have yet to be created.

The whole universe the brand comprises is the perfect synergy to start creating spaces.

And Cemher line is your ally.



C

IT IS THE PERFECT UNION BETWEEN THE TECHNICAL AND AESTHETIC

Its finish is elegant and minimalist, creating (depending on the Cemher product chosen) highly decorative marbling effects, capable of embellishing any room. In addition, it goes well with other materials such as wood; when combined to decorate walls or floors they make really special spaces.

PERFECTLY ADAPTABLE

Its flexibility and minimal thickness allow it to adapt to any type of surface: rough or smooth, horizontal or vertical. There is no need for preparatory works as Cemher line can be applied directly on to existing materials.



INFINITE ELEGANCE

Why do we say this? Unlike other materials, this material does not need expansion joints, so the result is a continuous and infinite floor or wall covering.

NO LIMITS

Colours, textures, shapes and different effects. Microcement has no limits when it comes to creating a customised space.

It is a decorative coating containing a cementitious base mixed with polymers, fibres, resins, aerators, ultrafine aggregates and mineral pigments; it does not need expansion joints and it is only 1 mm to 3 mm thick. It is the ideal material to cover walls and floors without having to remove the existing materials.

- Ideal for modern and minimalist environments
- Applicable on all types of surfaces: walls, floors, furniture, swimming pools.
- Continuous flooring (no joints required)
- A wide range of colours
- Different finishes and textures
- Excellent strength
- Easy maintenance

Properties of the Microcement:

08



Elasticity and flexibility



To fit any shape or geometry



Durable and robust



Adherence on all types of substrate



Continuous. Joint-free



Fire-retardant



UV-resistant



Stain repellent



Excellent chemical and mechanical resistance

It is suitable for:



Furniture



Radiant floor



Indoor or outdoor



Adapting to the needs of each space is a priority for our brand; this is why we have established 4 lines of microcement:

microduo SIMPLICITY

Very often we like the complication of being able to opt for simplicity. The difficult art of simplicity is embodied in this line, it is simplicity among microcements, thanks to its easy workability.

microdur STRENGTH

The ability to withstand and resist. This is how we would define strength and this is how we define the Microdur line, given its powerful hardness that makes it an excellent material for floors and walls exposed to the adversities of everyday life.

microlevel SAFETY

A risk occurs when there is the possibility that a threat will become a disaster. Or, to put it another way, when a glass of wine leaves a stain on the living room floor for ever. The Microlevel line has an enviable hardness not available in other flooring materials, without losing its aesthetics and its marbling effect, as it is so lightweight.

micropool ADAPTATION

The ability to change to be able to survive in a situation different from the original one. Our swimming pool line perfectly adapts its conditions to an aquatic habitat without sacrificing its essence.

09



MICRODUO –SIMPLICITY–

TWO-COMPONENTS MICROCEMENT

The Microduo microcement line is characterised by its use of two components for its hardening. The microcement powder must be mixed with Resincem in the appropriate proportion to give the system the ideal hardness and adherence.

It is easy to apply and handle with a trowel due to its very long hardening time.

microduo®

BASE

Microduo Base is a two-component microcement used as an base layer in the preparation of Fine, Medium, High or Extreme microcements. The regularisation provided by the aggregate is very good as it is fairly thick, it therefore gives a perfectly flat surface with a high covering power. The thickness of the aggregate used means there is no shrinkage in the base or losses during drying. When applying Microduo Fine, it is best to apply one or two coats of Microduo Medium Traffic prior to filling the base. Fewer layers of Microduo Fine will then be required to achieve a higher compressive strength.

Performance: 1,5 Kg/m²

Proportion: 20 Kg Microduo Base + 5 L the Resin Cem

Format: 20 Kg

It is suitable for:



Vertical surfaces



Floor

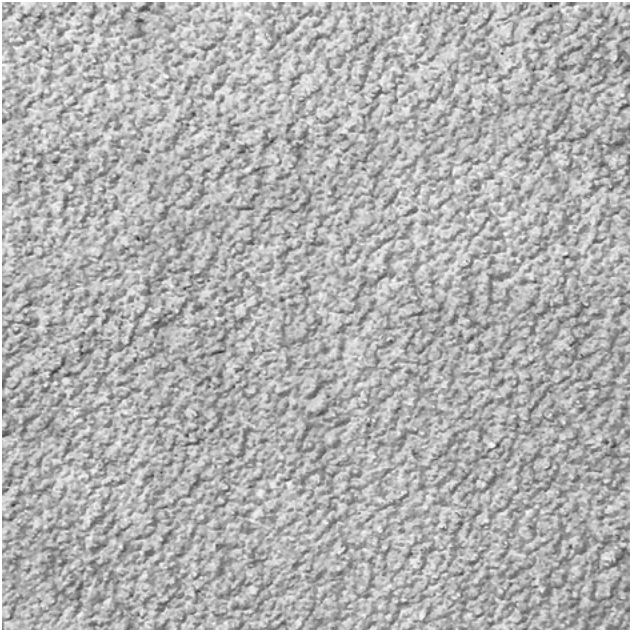
Differentiated qualities of each product:



More than 5 h of product life time



Antislip



microduo®

FINE

Microduo Fine is a two-component microcement with a very fine finish, which, by adding the Toner of the chosen colour, gives a decorative surface with a stucco effect. It is only recommended for vertical surfaces.

Performance: 0,5 Kg/m²

Proportion: 10 Kg Microdur Fine + 5 L de Resin Cem

Format: 10 Kg

It is suitable for:

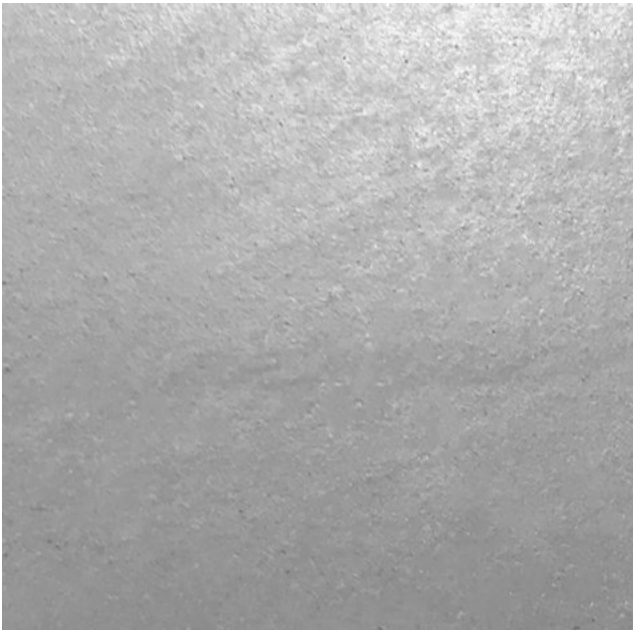


Vertical surfaces

Differentiated qualities of each product:



More than 5 h of product life time



microduo®

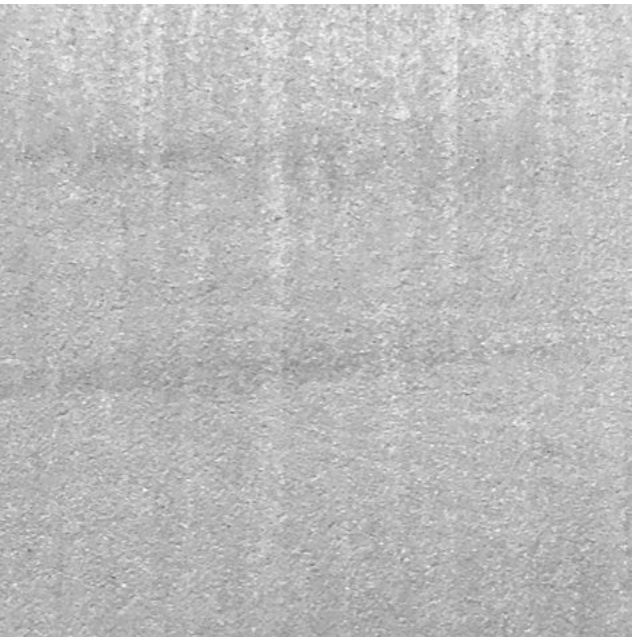
MEDIUM TRAFFIC

Microduo Medium Traffic is a two-component micro-cement with a very subtle finish (less marbling), which, by adding the Toner of the chosen colour, gives a lightly textured decorative surface. It is stronger and harder than Microduo Fine and it also has an anti-slip finish. It can be applied to an infinite number of substrates, although it is best on surfaces with medium traffic. It can also be applied to vertical surfaces.

Performance: 0,6 Kg/m²

Proportion: 20 Kg Microduo Medium Traffic + 8L the Resin Cem

Format: 20 Kg



It is suitable for:



Vertical surfaces



Floor

Differentiated qualities of each product:



More than 5 h of product life time



Antislip



Medium Traffic

microduo®

HIGH TRAFFIC

Microduo High Traffic is a two-component micro-cement with a more textured finish and without the stucco effect of the previous lines. By adding the Toner with the required colour it is possible to obtain a rough decorative finish with good flatness on horizontal surfaces. It has a better anti-slip finish and greater strength and hardness than the Medium and Fine lines. It is recommended for high traffic surfaces and floors. It should be noted that it can also be used as a Base, when a more fine-grained base is required.

Performance: 0,8 Kg/m²

Proportion: 20 Kg Microdur High Traffic + 6 L the Resin Cem

Format: 20 Kg



It is suitable for:



Vertical surfaces



Floor

Differentiated qualities of each product:



More than 5 h of product life time



Antislip



High Traffic

microduo®

EXTREME TRAFFIC

Microduo Extreme Traffic is a two-component micro-cement with a more textured finish than the previous lines, without a stucco effect. By adding the Toner with the required colour it is possible to obtain a very rough decorative finish with good flatness that allows the product to even out very well on horizontal surfaces. It is stronger and harder than the previous lines and has excellent anti-slip properties. It is recommended for surfaces and floors with extreme traffic. It can also be used as a Base when an intermediate grain size is required, between that of the Microduo Base and the Microduo High Traffic.

Performance: 1 Kg/m²

Proportion: 20 Kg Microdur Extreme Traffic + 6 L the Resin Cem

Format: 20 Kg

It is suitable for:



Vertical
surfaces



Floor

Differentiated qualities of each product:



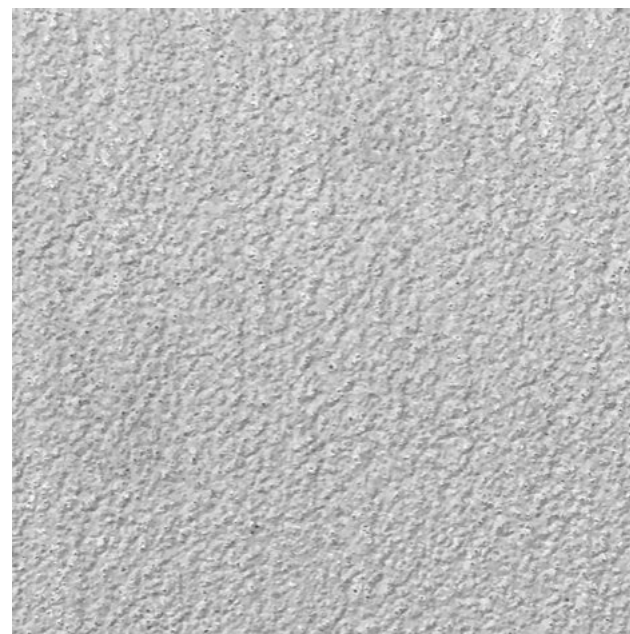
More than 5 h
of product life
time



Antislip



Extreme
Traffic

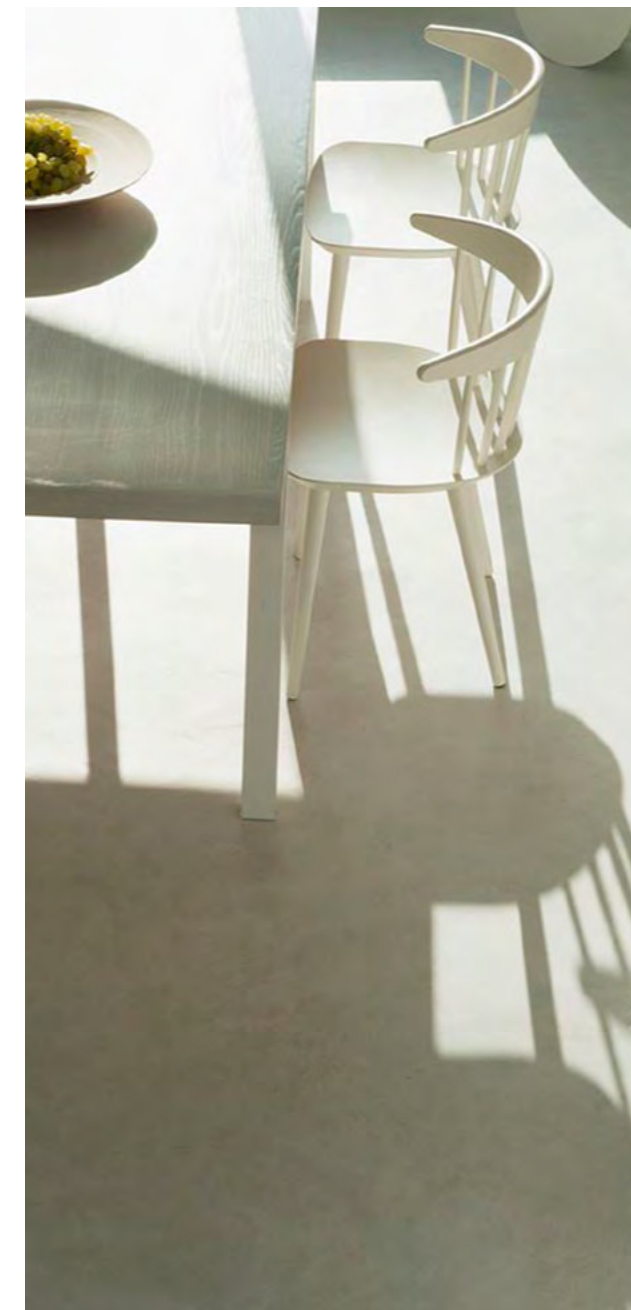
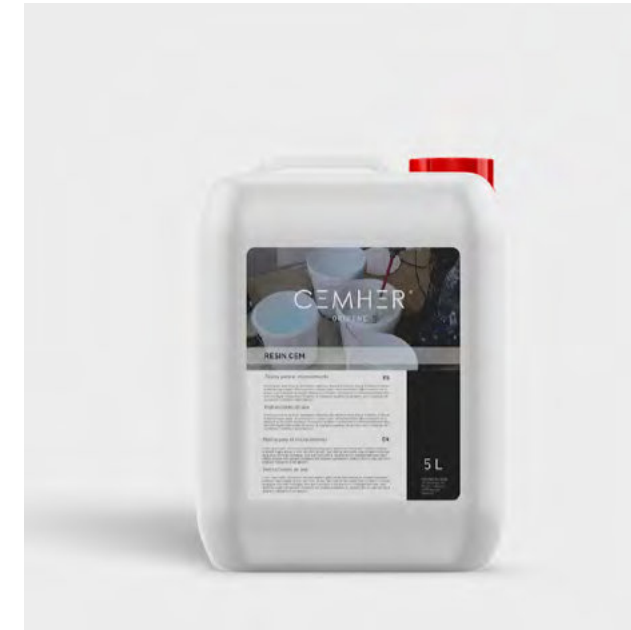


microduo®

RESIN CEM

Resin-Cem is a special resin for two-component micro-cement systems (Microduo). When mixed in the appropriate proportions it provides excellent compatibility, hardness and adherence to microcement and mortar systems.

Format: 5 L, 10 y 25 L



MICRODUR -STRENGTH -

SINGLE-COMPONENT MICROCEMENT

The Microdur microcement line includes single-component coatings, which only need to be mixed with water to harden. The main difference to those that are mixed with a resin (Microduo) is the shorter handling life of the mixture, however, the hardness of this single-component product is superior to that of the two-component materials.



microdur®

BASE

Microdur Base is a single-component microcement used as a preliminary step in the preparation of Fine, Medium, High and Extreme microcements. The regularisation provided by the aggregate is very good as it is fairly thick, it therefore gives a perfectly flat surface with a high covering power. It has a very high compressive strength. If Microdur Fine is to be applied it is best to apply one or two coats of Microdur Medium Traffic before filling the base. Fewer layers of MicrodurFine will then be required to achieve a higher compressive strength.

Classified as CTC40-F10 according to the UNE-EN 13813 standard.

20 Performance: 1,5 Kg/m²

Proportion: 20 Kg Microdur Base + 5 L of water

Format: 20 Kg

It is suitable for:



Vertical surfaces



Floor

Differentiated qualities of each product:



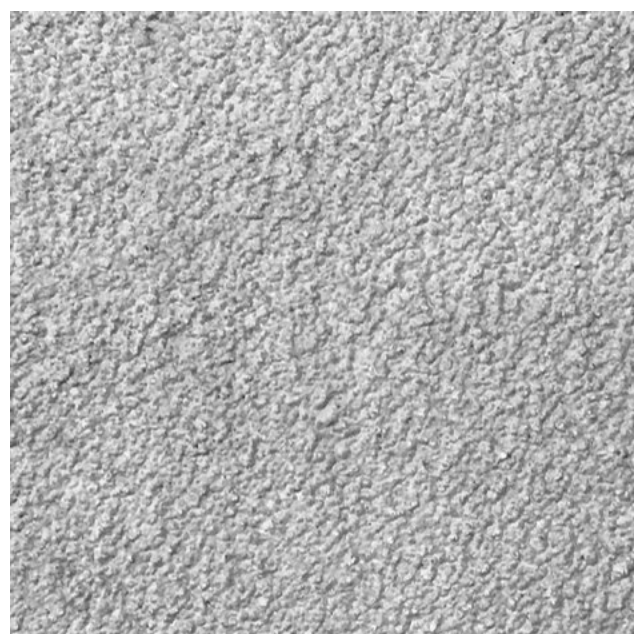
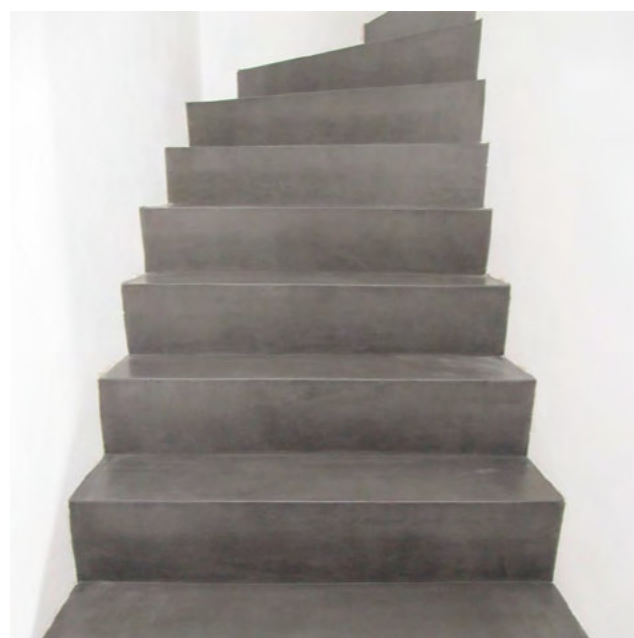
More hardness



UNE EN 13813 CTC40-F10



Antislip



microdur®

FINE

Microdur Fine is a single-component microcement with excellent hardness and a stucco effect. By adding the Toner with the required colour and water in the appropriate proportion it is possible to obtain a continuous coating with great mechanical strength and no shrinkage. It has very good adhesion on any surface. It is only recommended for vertical surfaces.

Classified as CT-C30-F9 according to the UNE-EN 13813 standard.

Performance: 0,5 Kg/m²

Proportion: 10 Kg Microdur Fine + 4 L of water

Format: 10 Kg

21

It is suitable for:



Vertical surfaces

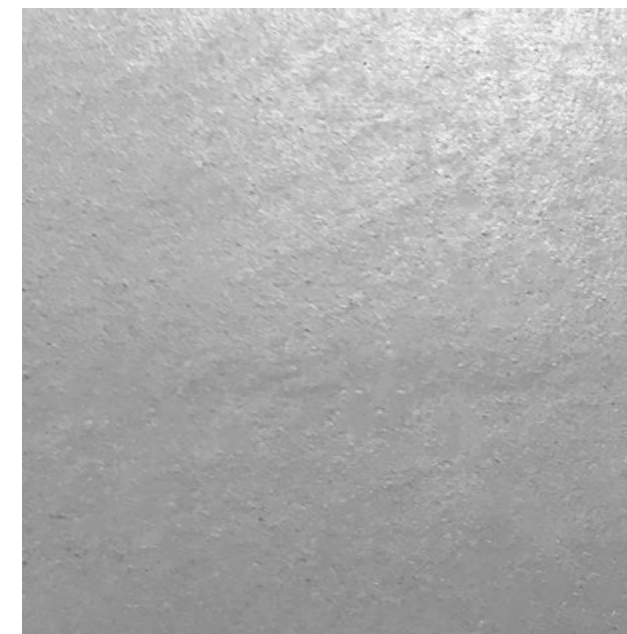
Differentiated qualities of each product:



More hardness



UNE EN 13813 CT-C30-F9



microdur®

MEDIUM TRAFFIC

Microdur Medium Traffic is a single-component micro-cement with excellent hardness and a subtle finish. As it is coarser grained than Microdur Fine, so the marbling that imitates a stucco effect is not as apparent. Nevertheless, a much stronger continuous pavement can be obtained with greater hardness. By adding the Toner with the required colour and water in the appropriate proportion it is possible to obtain a continuous coating with great mechanical strength and no shrinkage. It has very good adhesion on any surface. However, its most recommended use is on surfaces with medium traffic. It can also be applied to vertical surfaces.

Classified as CT-C40-F10 according to the UNE-EN 13813 standard.

Performance: 0,6 Kg/m²

Proportion: 20 Kg Microdur Medium Traffic + 7 L of water.

Format: 20 Kg

It is suitable for:



Vertical
surfaces



Floor

Differentiated qualities of each product:



More
hardness



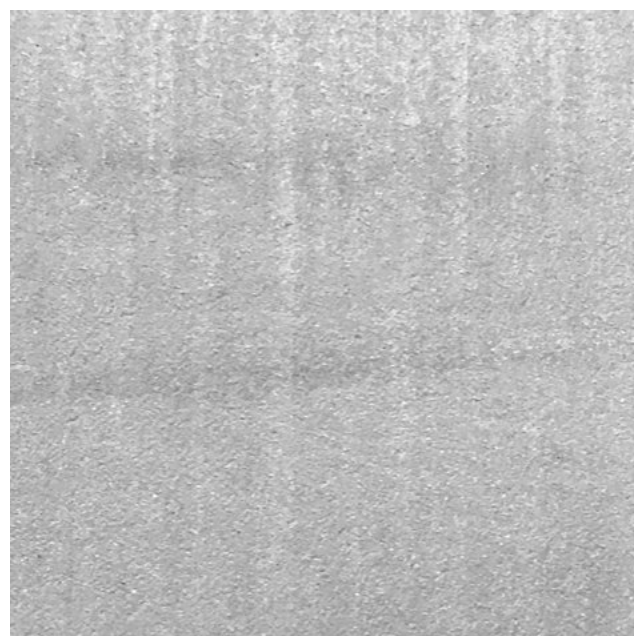
UNE EN 13813
CT-C40-F10



Medium
Traffic



Antislip



microdur®

HIGH TRAFFIC

Microdur High Traffic is a single-component micro-cement with a rougher finish and without the stucco effect of the previous lines. By adding the Toner with the required colour it is possible to obtain a rough decorative finish with good flatness on horizontal surfaces. It has a better anti-slip finish and greater strength and hardness than the Medium and Fine products. It is recommended for high traffic surfaces and floors. It should be noted that it can also be used as a Base, when a more fine-grained base is required.

Classified as CT-C40-F10 according to the UNE-EN 13813 standard.

Performance: 0,8 Kg/m²

Proportion: 20 Kg Microdur High Traffic + 6 L of water.

Format: 20 Kg

It is suitable for:



Vertical
surfaces



Floor

Differentiated qualities of each product:



More
hardness



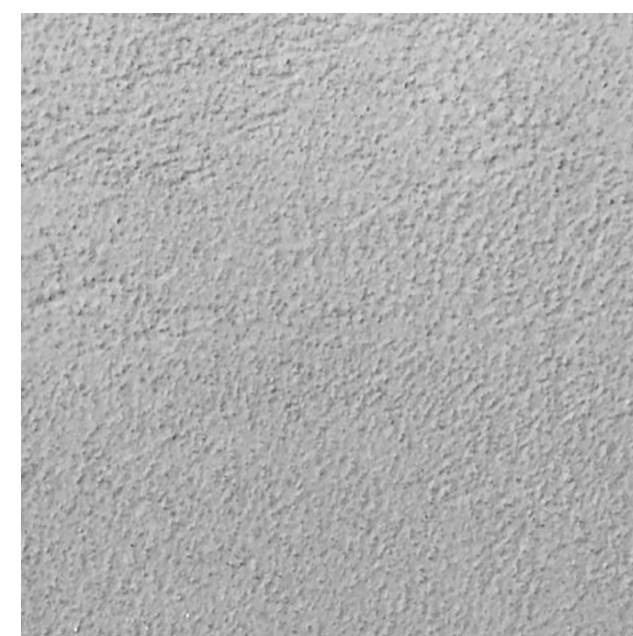
UNE EN 13813
CT-C40-F10



High
Traffic



Antislip



microdur®

EXTREME TRAFFIC

Microdur Extreme Traffic is a single-component micro-cement with a rougher finish than the previous lines and without a stucco effect. By adding the Toner with the required colour it is possible to obtain a very rough decorative finish with good flatness that allows the product to even out very well on horizontal surfaces. It is stronger and harder than the previous lines and has excellent anti-slip properties. It is recommended for surfaces and floors with extreme traffic. It can also be used as a Base when an intermediate grained base is required, between Microdur Base and Microdur High Traffic.

Classified as CTC40-F10 according to the UNE-EN 13813 standard.

Performance: 1 Kg/m²

Proportion: 20 Kg Microdur Extreme Traffic + 6 L of water.

Format: 20 Kg

It is suitable for:



Vertical
surfaces



Floor

Differentiated qualities of each product:



More
hardness



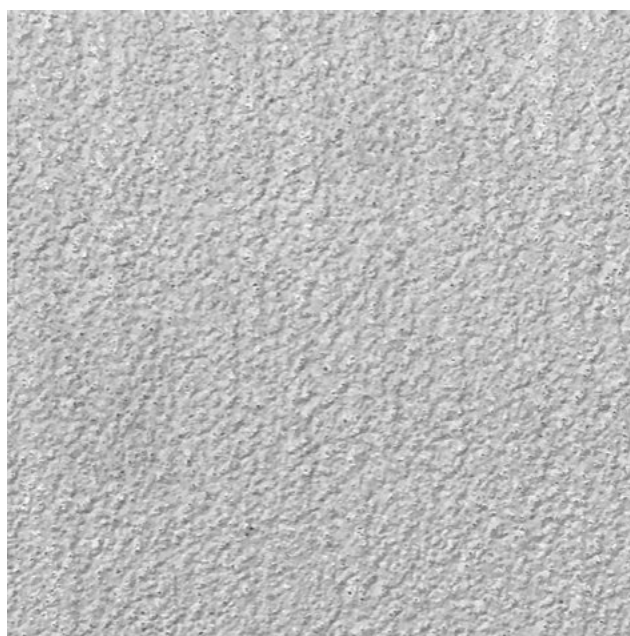
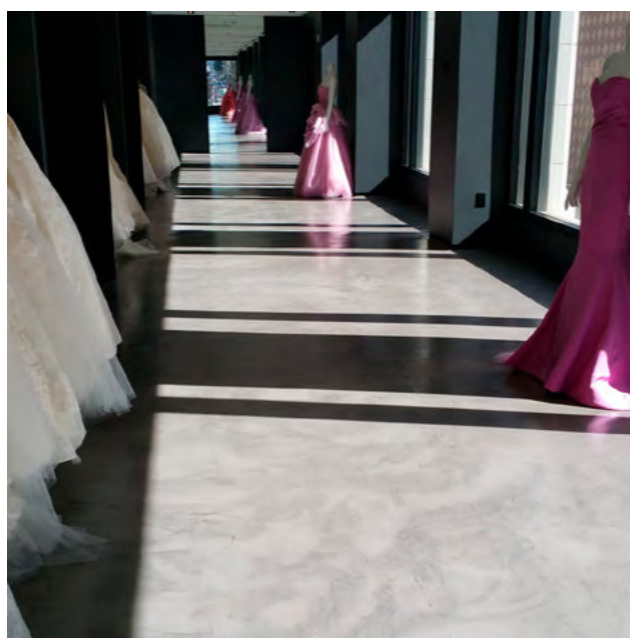
UNE EN 13813
CTC40-F10

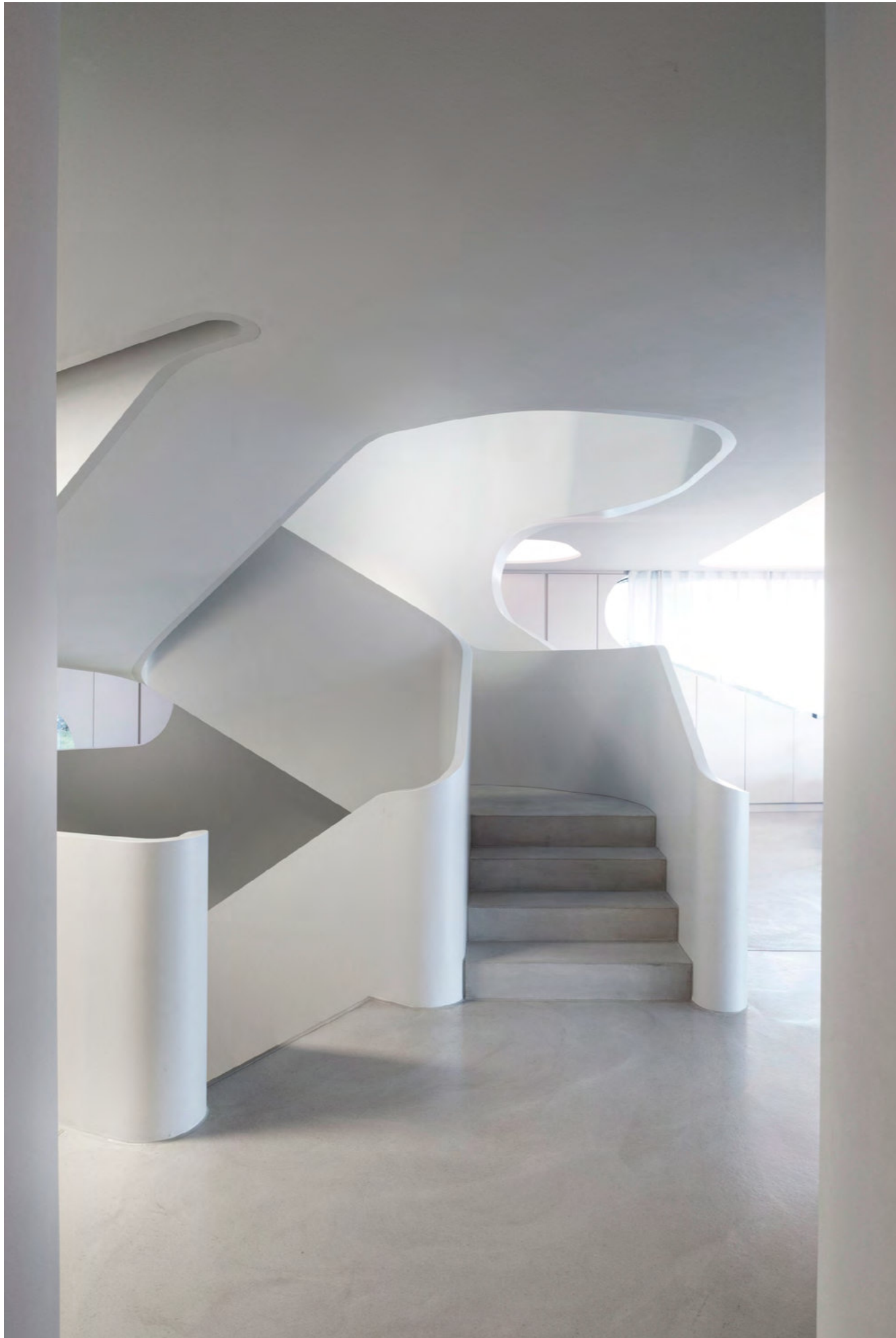


Extreme
Traffic



Antislip





MICROLEVEL – SAFETY –

SINGLE-COMPONENT MICROCEMENT

The Microlevel microcement line is a single-component coating with a tendency to level out. It has very high hardness and mechanical strength, much greater than the two-component (Microduo) lines and even the Microdur line. The main difference to the other lines that are also mixed with water is the shorter handling time of the mixture.

microlevel®

BASE

Microlevel base is a very high hardness single-component microcement with great levelling that is used as a preliminary step in the preparation on Fine, Medium, High or Extreme microcements. The regularisation provided by the aggregate is very good as it is fairly thick, it therefore gives a perfectly flat surface with a high covering power. It has a very high compressive strength. If Microlevel Fine is to be applied, it is best to apply one or two coats of Microlevel Medium Traffic prior to filling the base. Fewer layers of Microlevel Fine will then be required to achieve a higher compressive strength.

Classified as CT-C40-F10 according to the UNE-EN 13813 standard.

Performance: 1,5 Kg/m²

Proportion: 20 Kg Microdur Base + 4,5 L of water.

Format: 20 Kg

It is suitable for:



Floor

Differentiated qualities of each product:



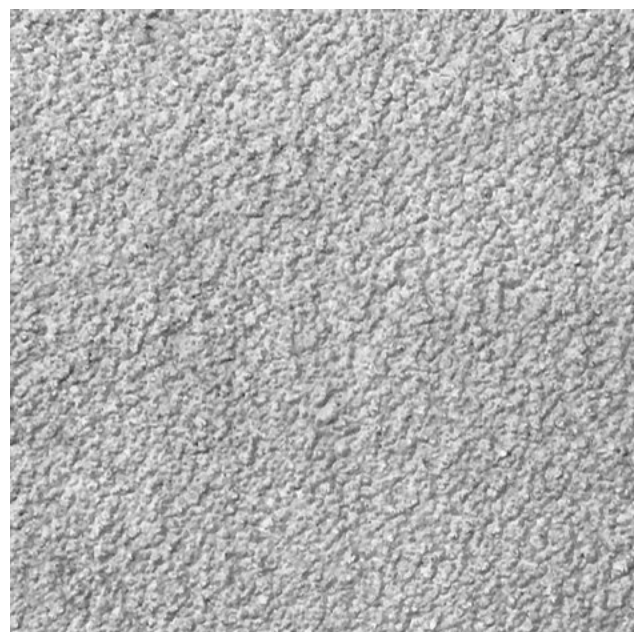
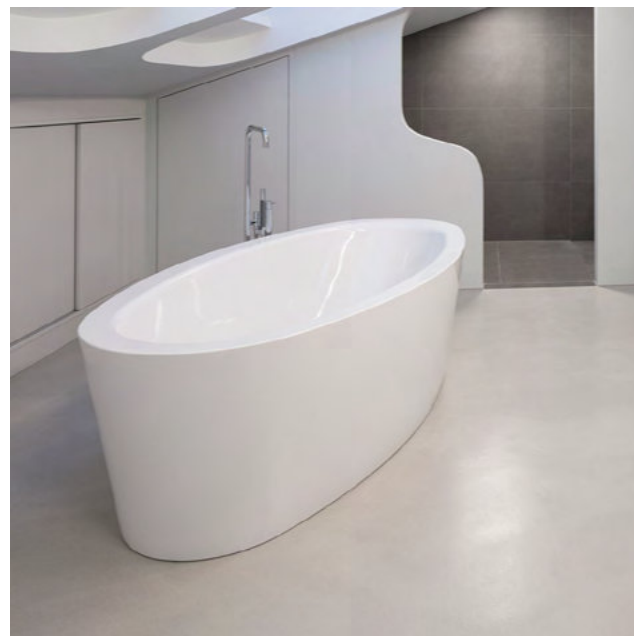
Much more hardness



UNE EN 13813 CT-C40-F10



Antislip



microlevel®

FINE

Microlevel Fine is a single-component microcement with high hardness, great levelling and a stucco effect. By adding the Toner with the required colour and water in the appropriate proportion it is possible to obtain a continuous coating with great mechanical strength and no shrinkage. It has very good adhesion on any surface. It is only recommended for vertical surfaces.

Classified as CT-C30-F9 according to the UNE-EN 13813 standard.

Performance: 0,5 Kg/m²

Proportion: 10 Kg Microdur Fine + 3,5 L of water.

Format: 10 Kg

It is suitable for:



Vertical surfaces

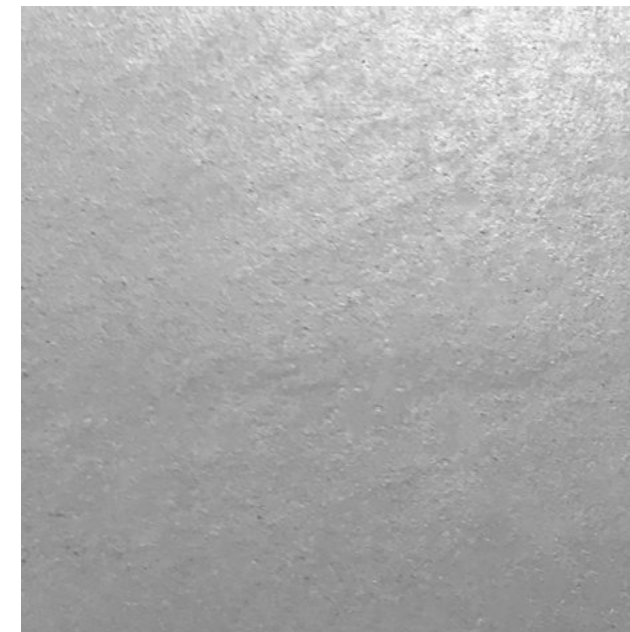
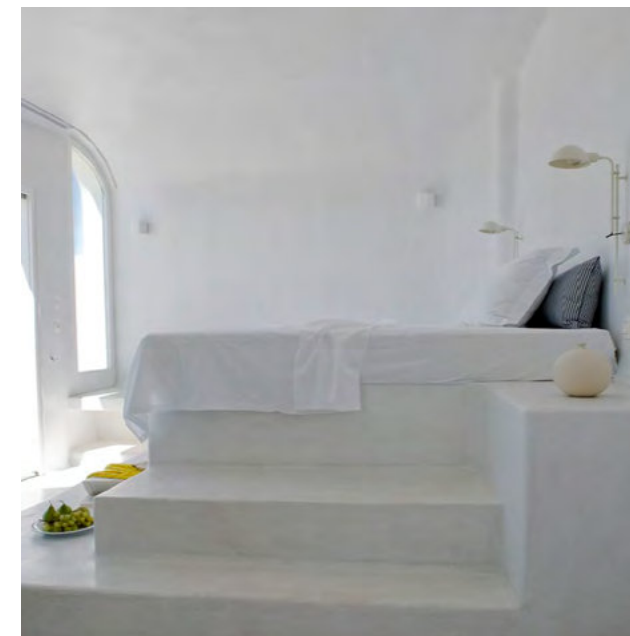
Differentiated qualities of each product:



Much more hardness



UNE EN 13813 CT-C30-F9



microlevel®

MEDIUM TRAFFIC

Microlevel Medium Traffic is a single-component microcement with high hardness, great levelling and a subtle finish. As it is coarser grained than Microlevel Fine the marbling that imitates the stucco effect is less obvious. Nevertheless, a much stronger continuous pavement can be obtained with greater hardness. By adding the Toner with the required colour and water in the appropriate proportion it is possible to obtain a continuous coating with great mechanical strength and no shrinkage. It has very good adhesion on any surface. It can be applied to all types of substrate. However, its most recommended use is on surfaces with medium traffic. It can also be applied to vertical surfaces.

Classified as CT-C40-F10 according to the UNE-EN 13813 standard.

Performance: 0,6 Kg/m²

Proportion: 20 Kg Microdur Medium Traffic + 6 L of water.

Format: 20 Kg

It is suitable for:



Vertical
surfaces



Floor

Differentiated qualities of each product:



Much
more
hardness



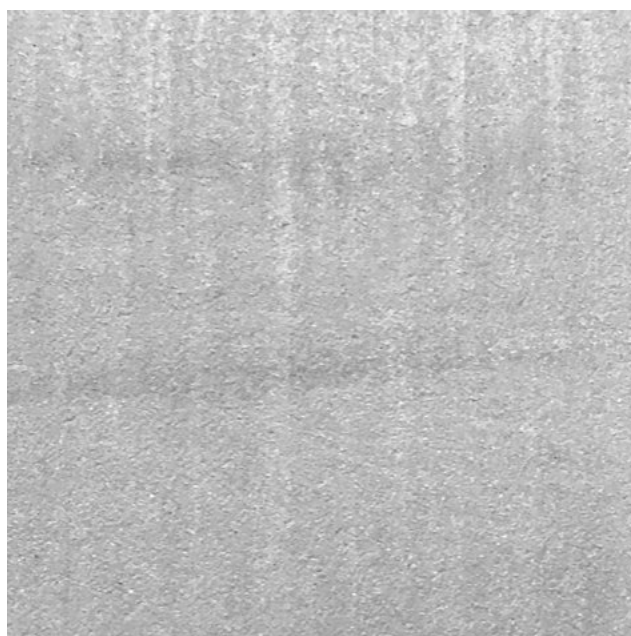
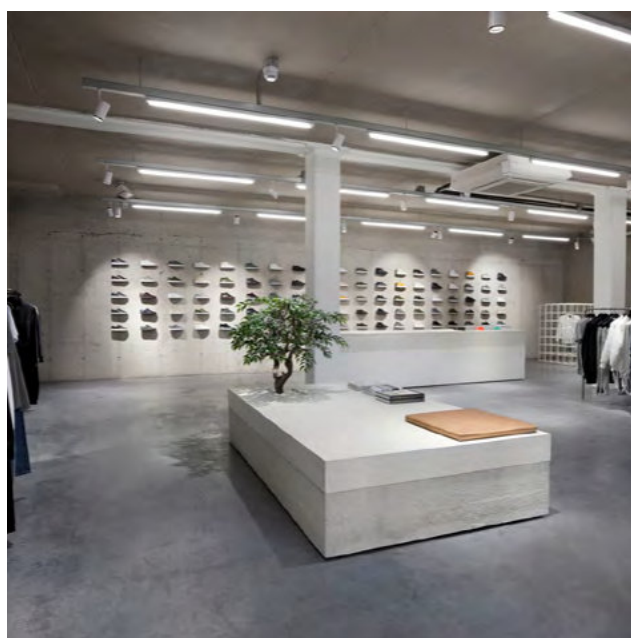
UNE EN 13813
CT-C40-F10



Average
traffic



Antislip



microlevel®

HIGH TRAFFIC

Microlevel High Traffic is a single-component microcement with high hardness and great levelling, it has a rougher finish without the stucco effect of the previous lines. By adding the Toner with the required colour it is possible to obtain a rough decorative finish with good flatness on horizontal surfaces. It has a better anti-slip finish and greater strength and hardness than the Medium and Fine products. It is recommended for high traffic surfaces and floors. It should be noted that it can also be used as a Base, when a more fine-grained base is required.

Classified as CT-C40-F10 according to the UNE-EN 13813 standard.

Performance: 0,8 Kg/m²

Proportion: 20 Kg Microdur High Traffic + 5 L of water.

Format: 20 Kg

It is suitable for:



Floor

Differentiated qualities of each product:



Much
more
hardness



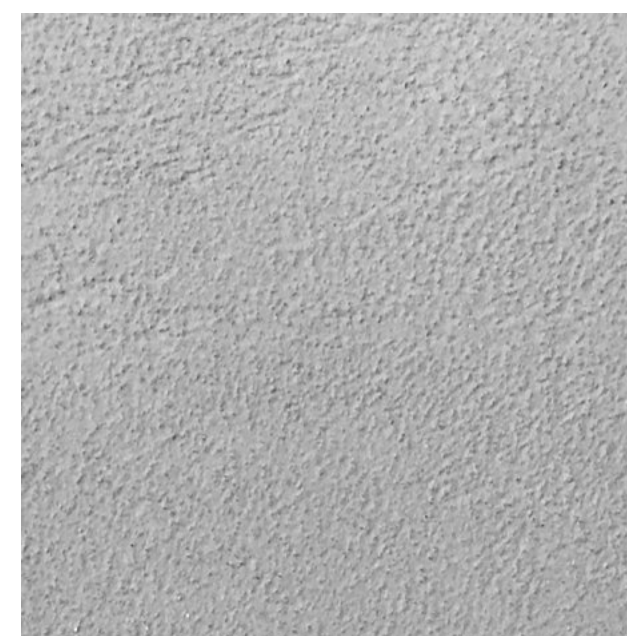
UNE EN 13813
CT-C40-F10



High
Traffic



Antislip



microlevel®

EXTREME TRAFFIC

Microdur Extreme Traffic is a single-component micro-cement with high hardness and great levelling, with a rougher finish than the previous lines and without any stucco effect. By adding the Toner with the required colour it is possible to obtain a very rough decorative finish with good flatness that allows the product to even out very well on horizontal surfaces. It is stronger and harder than the previous lines and has excellent anti-slip properties. It is recommended for surfaces and floors with extreme traffic. It can also be used as a base if an intermediate grained base is required between Microlevel Base and Microlevel High Traffic.

Classified as CTC40-F10 according to the UNE-EN 13813 standard.

Performance: 1 Kg/m²

Proportion: 20 Kg Microdur Extreme Traffic + 5 L of water.

Format: 20 Kg

It is suitable for:



Floor

Differentiated qualities of each product:



Much more hardness



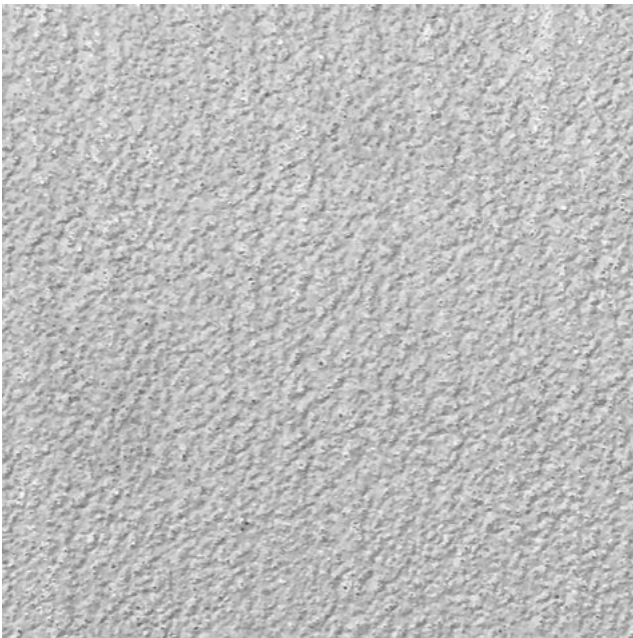
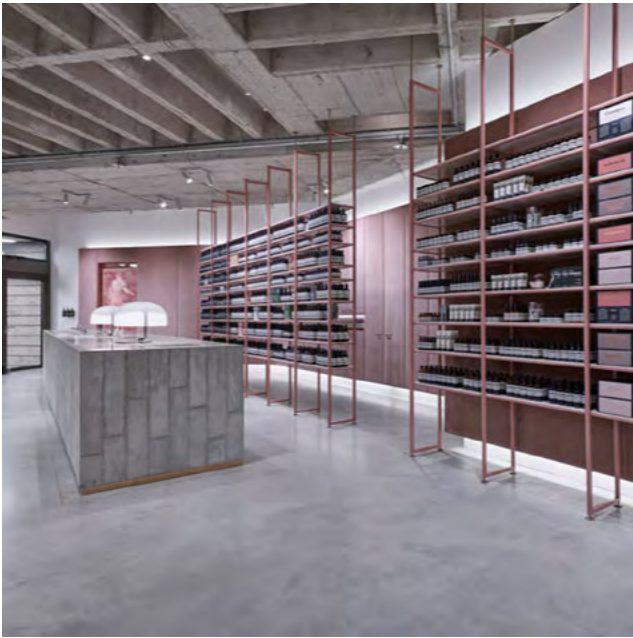
UNE EN 13813 CTC40-F10



Extreme Traffic



Antislip



MICROPOOL – ADAPTATION –

SINGLE-COMPONENT MICROCEMENT

The Micropool microcement line is characterised by being a single-component microcement that only needs to be mixed with water to harden. It is particularly suitable for application to surfaces that will be immersed in water, such as in swimming pools and ponds. Its formulation is designed to create a degree of permeability to water vapour and thus avoid the blistering caused by a lack of permeability.



micropool®

BASE

Micropool Base is a single-component coating used to regularise a surface prior to the application of Micropool Fine. It is particularly suitable for surfaces that will be immersed in water. It has a course grain to regularise the substrate. It is applied with a trowel directly onto the shotcrete or concrete. It is recommended that two coats of Micropool Finisher are applied over Micropool Base.

Classified as CT-C40-F10 according to the UNE-EN 13813 standard.

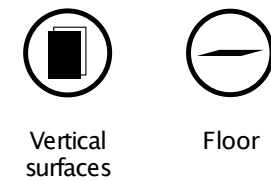
Performance: 1,5 Kg/m²

Proportion: 20 Kg Microdur Base + 5 L of water

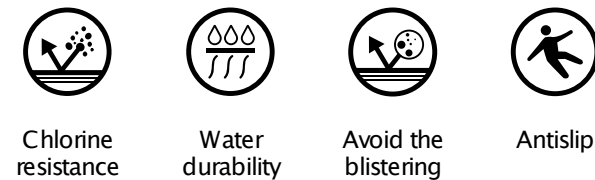
Format: 20 Kg



It is suitable for:



Differentiated qualities of each product:



micropool®

FINISHER

Micropool Finisher is a single-component coating that only needs to be mixed with water. It is particularly suitable for application to surfaces that will be immersed in water, such as in swimming pools or ponds. It is recommended that two coats of Micropool Finisher are applied over Micropool Base.

Classified as CT-C30-F9 according to the UNE-EN 13813 standard.

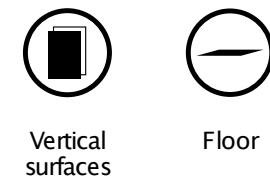
Performance: 0,5 Kg/m²

Proportion: 20 Kg Microdur Finisher + 5 L of water

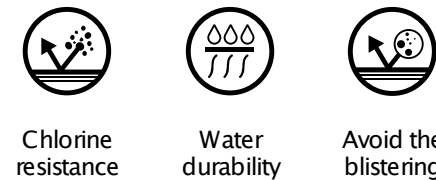
Format: 20 Kg



It is suitable for:



Differentiated qualities of each product:



micropool®

SELLADOR POOL

Single-component, colourless, solvent-based sealant. Provides protection from chlorinated water in swimming pools and reinforces the consistency of Micropool Finisher without blocking the system's transpiration channels. Apply over Micropool Finisher once it is completely dry.

Performance: 10 l/m²

Format: 4 L





TONERS

TONERS

Colour toners for microcement systems. They must be mixed with water for Microdur, Microlevel and Micro-pool systems; or with resin (Resin-Cem) for Microduo systems.



42



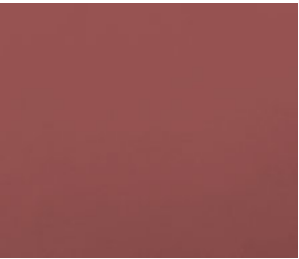
Oceano



Everets



Muérdago



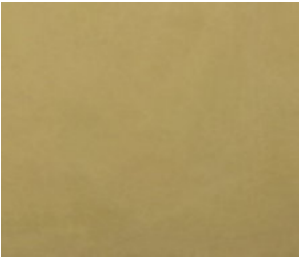
Vino tinto



Poseidón



Teide



Parrot



Marte



Manantial



Silver



Safari



Curry



Ola



Diamond



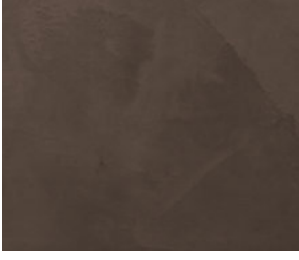
Uva



Midas



Tronco



Alcornoque



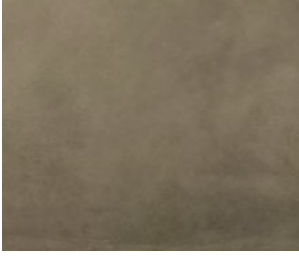
Cráter Volcánico



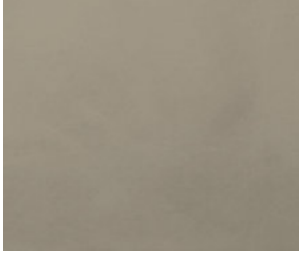
Galaxia



Chocolate



Ciervo



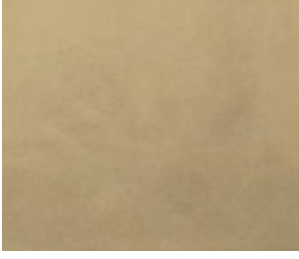
Arce



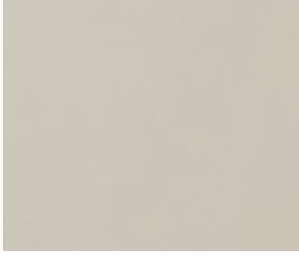
Piedra lunar



El álamo



Bisón



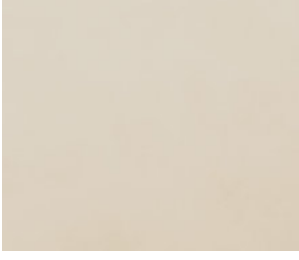
Paladio



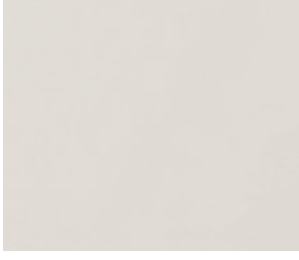
Roca alpina



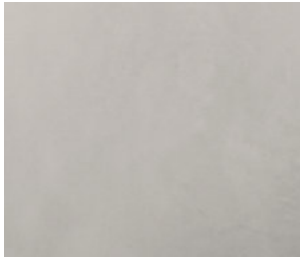
Alejandría



Piedra de lago



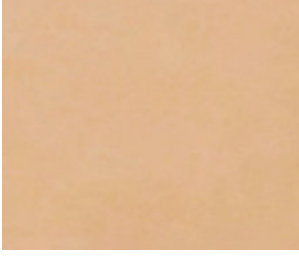
Nebulosa



Grafeno



Salmon



Malta



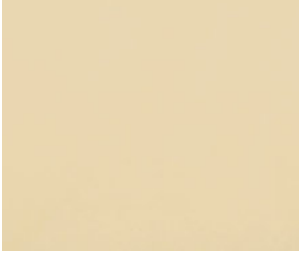
Escorial



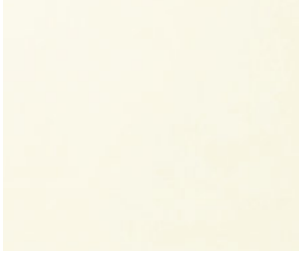
Titanium



Amanecer



Heno viejo



Alaska



Montblanc

43

PREPARATION

– BONDING BRIDGES –

ADHESION PROMOTER PRIMER





BONDING BRIDGE 100

Primer 100

It is a water-based resin that acts as an adhesion promoter between a porous or highly porous surface and microcement. It has high adherence and a high solids content allowing it to saturate porous substrates and keep the resin on the surface. It has great elasticity, providing it with excellent resistance to all weather conditions. It maintains its tack (Residual Tack) for approximately 12 hours.

Performance: 150 g/m²

Format: 5L and 25L



BONDING BRIDGE WITH TAC

Primer Tac

It is a water-based resin that acts as an adhesion promoter between non-porous surfaces (tiles, marble, metal or terrazzo) and the microcement. It has high adherence and maintains its tack (Residual Tack) permanently, providing it with a long handling time during application of the subsequent microcement layer. It has great elasticity, providing it with excellent resistance to all weather conditions.

Performance: 150 g/m²

Format: 5L and 25L





PREPARATION

– EPOXY –



IMPRIPOX

50

A two component epoxy resin with a high solids content (80%). High chemical resistance and impermeability. It acts as a vapour barrier to block moisture penetration by capillary action and inhibits moisture stains at tile joints. It can also be used as a colourless epoxy varnish on microcements and mortars. It has a high chemical resistance and mechanical strength and hardness to scratching. Easy application by roller.

Performance: 150 g/m²

Format: 5 L + 2 L



AQUASELL

A two-component water-based epoxy resin. It has very good adhesion even to damp surfaces (less than 8% moisture content). It acts as a vapour barrier by blocking penetration due to capillary action. It can also be used as a water-based epoxy varnish on microcements and mortars. It has a high chemical resistance and mechanical strength. It is also scratch resistant and impermeable. Organic solvent-free.

Performance: 120 g/m²

Format: 5 L + 2 L



GLASS EPOXY 100% SOLIDS

51

A two-component epoxy resin with 100% solids. It has excellent filling power and is transparent. Very high chemical resistance and impermeability. It acts as a vapour barrier by blocking penetration due to capillary action. It must be applied using a trowel by pouring the product on the surface and spreading using a trowel to dissipate the bubbles produced by the shaking when mixing the two components. It can also be used as a epoxy varnish with a very high gloss finish and a hardness characteristic of glass. It can also be used to seal 3D vinyls. Not suitable for use outdoors.

Performance: 1,20 Kg/m²

Format: 5 L + 2 L

SEALANTS – PRIMERS –





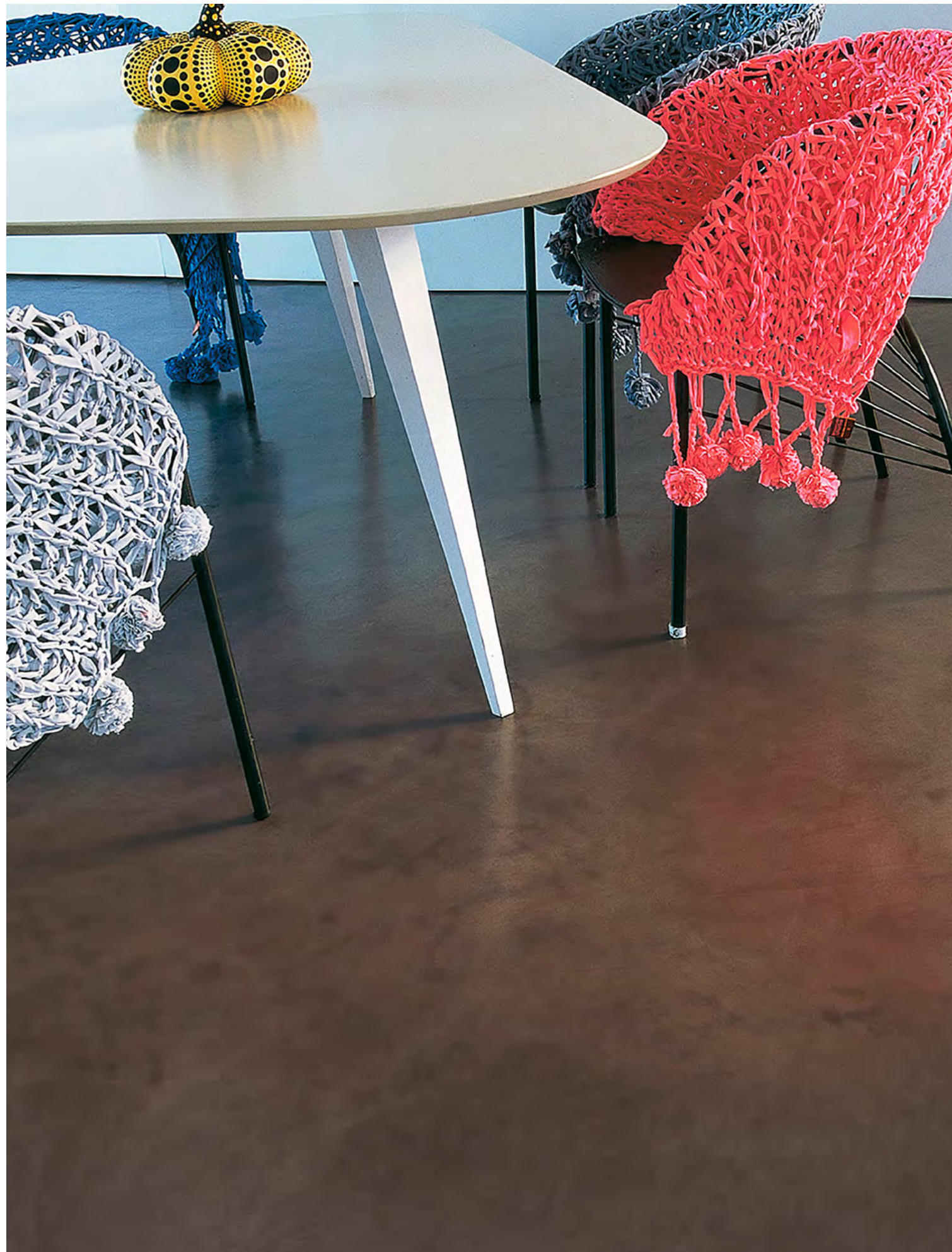
HYDROPRIMER CI

54

A high solids single-component acrylic sealer primer. It is able to waterproof the substrate and seal it for the subsequent application of a polyurethane finish. It reduces the consumption of these finishes and its pore-covering action avoids roller marks.

Performance: 100 g/m²

Format: 5 L



HARD SEALANT

55

A single-component polyurethane consolidating primer. It not only waterproofs and seals the substrate like other acrylic sealants, it also provides an extraordinary final hardness to the whole system (the greater the hardness of the base, the greater the hardness of the final finish). It is quick drying allowing the application of polyurethane finishes in less time than conventional acrylics. In addition, it causes only slight or zero alteration to the colour of the microcement.

Performance: 100 g/m²

Format: 5 L



SEALANTS – POLYURETHANE –



AQUAMAX PLUS 10%

58

A water-based two-component polyurethane varnish with excellent hardness and good chemical resistance. It is easy to apply leaving a very uniform final appearance without marks or roller lines. Highly stretched finishes are obtained, without defects and with a smooth feel. Highly resistant to chemical agents such as bleach, hydrochloric acid and vinegar. Impervious to staining by wine, coffee and oil. Presealing with Hydroprimer or Hard Sealant is required. Suitable for indoor and outdoor usage. With matt, satin or gloss finish.

Performance: 8 – 10 l/m²

Finish: Glossy, satin and matt

Proportion: 10% (5 L comp “A” + 0,5 L comp “B”)

Format: 5 L + 500 g



AQUAMAX DUR 20%

A two-component water-based polyurethane varnish with very high hardness and chemical resistance. Ideal for high traffic surfaces. Very good resistance to scratching and chemical agents such as bleach, hydrochloric acid and vinegar. Impervious to staining by wine, coffee and oil. Its solids content is higher than Aquamax Plus 10%, so it provides a greater filling capacity with more resistant finishes. Very fast drying, partial mixing is recommended. Presealing with Hydroprimer or Hard Sealant is required. Suitable for indoor and outdoor usage. With matt, satin or gloss finish.

Performance: 8 – 10 l/m²

Proportion: 20% (5 L comp “A” + 1 L comp “B”)

Finish: Glossy, satin and matt

Format: 5 L + 1L



AQUAMAX EXTREM 40%

A two-component water-based polyurethane varnish with very high hardness and chemical resistance, even higher than solvent-based polyurethane. Very high solids content providing great covering power with very resistant finishes. Ideal for high traffic systems and those with the most stringent demands. Unaffected by chemical agents such as bleach, hydrochloric acid and vinegar. Impervious to staining by wine, coffee and oil. Presealing with Hydroprimer or Hard Sealant is required. Suitable for indoor and outdoor usage. With matt, satin or gloss finish.

Performance: 8 – 10 l/m²

Proportion: 40% (5 L comp “A” + 2 L comp “B”)

Finish: Glossy, satin and matt

Format: 5 L + 2L



59



MAXIPUR 50%

60

A two-component solvent-based aliphatic acrylic polyurethane varnish. It has excellent hardness, chemical resistance and does not turn yellow when used outdoors. Its high solids content and low viscosity give it great penetration and adhesion on a range of substrates. Ideal for high traffic systems due to its high resistance to friction and excellent surface hardness. It is very important to previously seal with Hydroprimer or Hard Sealant to prevent the product altering the microcement's colour and to give perfect finishes without irregularities. Suitable for indoor and outdoor usage. With matt, satin or gloss finish.

Performance: 8 – 10 l/m²

Proportion: 50% (4 L comp "A" + 2 L comp "B")

Finish: Glossy, satin and matt

Format: 4 L + 2L



MAXIPUR 25%

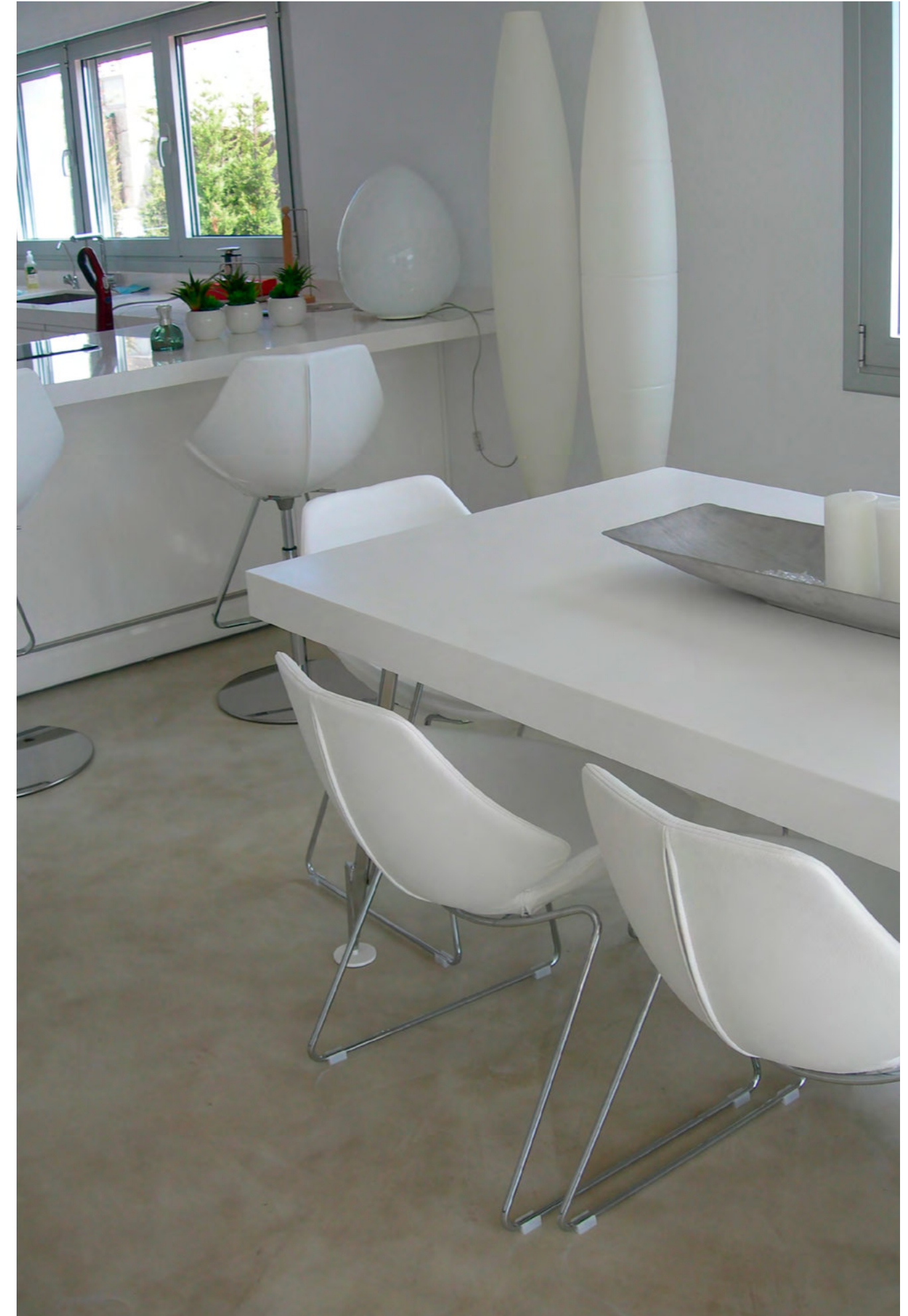
A two-component solvent-based aliphatic acrylic polyurethane varnish. Its viscosity and solids content is higher than Maxipur 50%, so it provides greater filling and covering capacity. It provides thicker films with excellent chemical resistance and very high hardness for the most demanding finishes. Ideal for high traffic surfaces. It is very important to previously seal with Hydroprimer or Hard Sealant to prevent the product altering the microcement's colour and to give perfect finishes without irregularities. Suitable for indoor and outdoor usage, no yellowing. With matt, satin or gloss finish.

Performance: 8 – 10 l/m²

Proportion: 25% (4 L comp "A" + 1 L comp "B")

Finish: Glossy, satin and matt

Format: 4 L + 1L



61

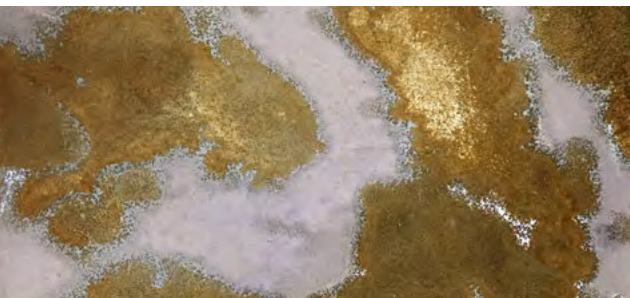
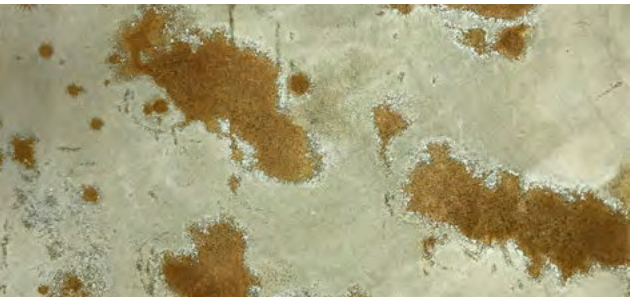
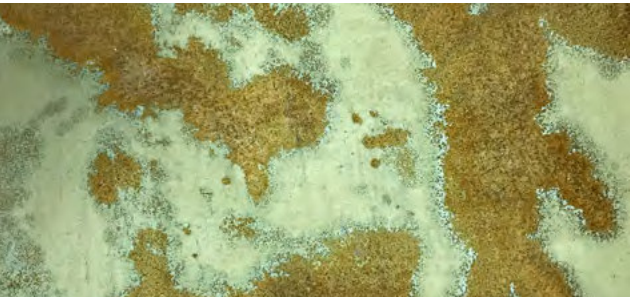
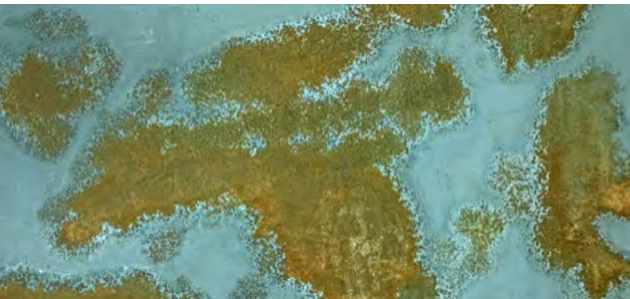
SPECIALITIES



OXIDHER

Oxidher is a single-component ready-to-use microcement characterised by providing finishes that combine an oxidised effect on the classic microcement marbling. Simply add a colour chosen from our colour chart (8 colours), any one of 3 textures and different grain sizes. For the most creative and exclusive oxidised effects the product should be applied in two successive coats, waiting approximately 15 minutes before applying the oxide activator by spray, brush or sponge. In a few moments, two oxidation colours will appear on the background, both the weathered oxide colour as well as blue oxidation colours. Spectacular finishes of singular beauty can be created. It is waterproof and will not be stained by water. Seal the effect created with our oxide sealant and your work of art will be within your reach.

Format: 4 L + 2L



CORTEN STEEL SYSTEM

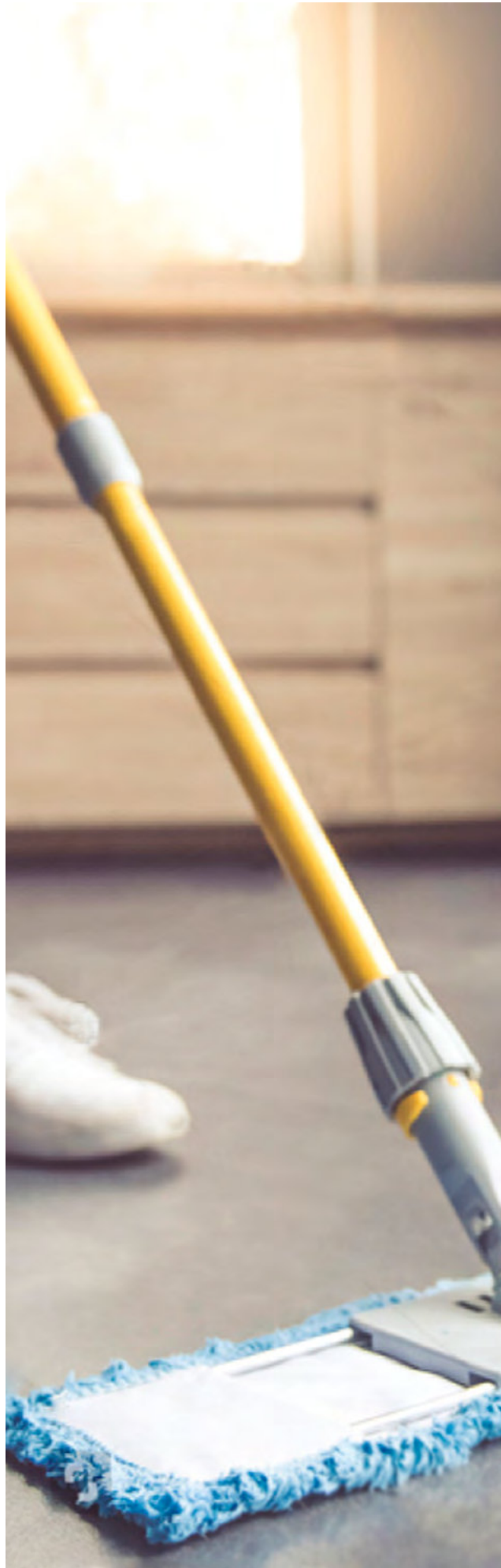
Corten Steel is an oxidation system capable of converting a simple surface into one with an oxidised effect in less than five minutes. It is composed of a resin, iron powder and three different activators. Depending on which of them is applied the system will oxidise in red, blue or green. There is a great variety of oxidised shades making this a decorative system that is easily adaptable to different rooms and styles. It is recommended for both indoor and outdoor usage and it can be applied to all types of substrates: metal, wood, cement, walls, ceramics, etc.



MICROCEMENT EFFECT

A decorative cementitious coating that simulates the effect of microcement. It comes ready to use, so no water or resin is needed for its application. Its high elasticity prevents cracking even under structural stress. It is highly waterproof, making it possible to apply it in damp areas without the material being darkened by the effect of water. It is highly resistant to wear and scratching. It is easy to apply with a trowel on a wide range of substrates. It can be combined with different coloured toners to create the required colour.

66



FLOOR PROTECT

67

Floor protect is a product specially designed to maintain and protect microcement. It waterproofs, revives and protects previously varnished surfaces. It restores minor scratching to a floor. It does not contain waxes, so it does not scratch when walked on and it is durable. Just by applying it and spreading it using a mop will protect floors for long periods of time.

Format: 5 L

CEMHER®

- ORIGIN -

MONJU

Monju Partners Pte Ltd
1 Fullerton Rd #02-01
Singapore 049213

+65 8498 5053
www.monjuglobal.com
www.instagram.com/monjusurfaces